

## LN8400 STREETLIGHT



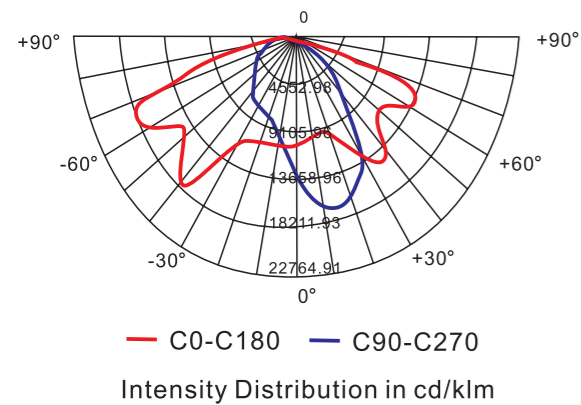
- Strong penetrating power in dusty and foggy weather
- Excellent waterproof and dustproof performance at IP65
- Shakeproof, rustproof and anticorrosive structure
- Excellent light distribution and high luminous efficacy
- Easy for installation and maintenance

### APPLICATIONS

Suitable for using as a road and street lighting in industrial cities, plants, venues, resident areas, etc.

## TECHNICAL DATA

### POLAR CURVE



- Voltage and Frequency : 220V/230V/240V AC 50/60HZ
- Degree of Protection : IP 65
- Ambient Temperature : -20°C+55°C
- Cabling :  $\varnothing 8 \sim \varnothing 10$ mm
- Class of Insulation : Class I
- Enclosure : Made of Aluminum Alloy
- Transparent Cover : Made of Tempered Glass

**CERTIFICATES : CE, SASO APPROVED**

## FEATURES

The light is at high luminous efficacy and power factor is over 0.94.

Using high purity aluminum as the fixture reflector together with optimized light distribution design, the light can provide wide-angle and excellent even illumination with strong penetrability through dust and fog.

Adopting high quality light alloy and high-tech spray coating technique, it can be used in high temperature, corrosive and humid environment for a long time.

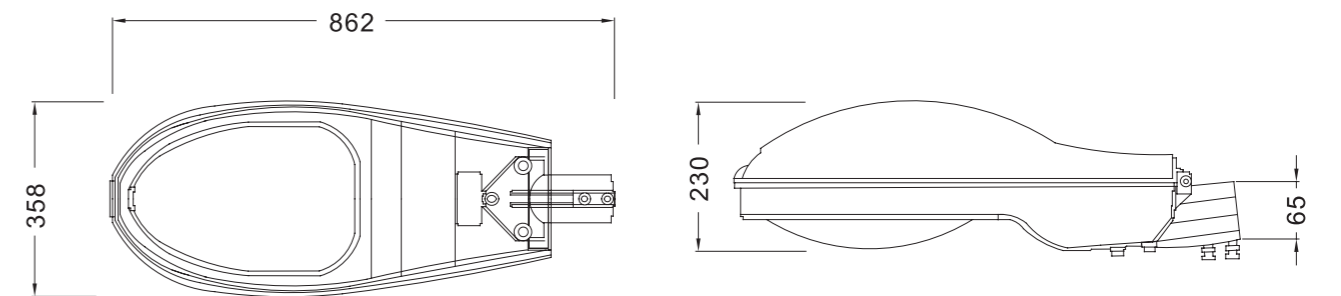
Cover made of Borosilicate glass at effective transmission, excellent heat-resisting and antishock performance.

Strong structure and selected quality components enable the light to work at high frequency shaking area.

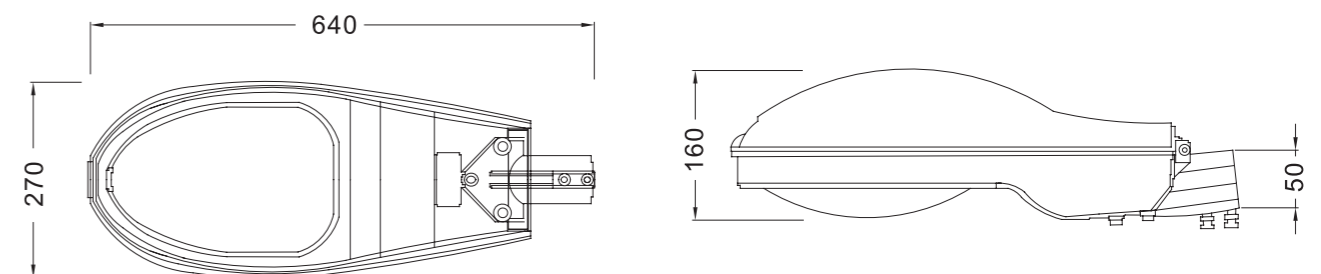
## SELECTION TABLE

Model No.	Lamp Type	Lamp Wattage	Luminous Flux	Average Lifespan	Lamp Holder	Weight
LN8400	MH	70W	5500 lm	10000h	E27	3.0kg
LN8400	MH	100W	9000 lm	10000h	E27	3.6kg
LN8400	MH	150W	13000 lm	10000h	E27	4.2kg
LN8400	MH	250W	21000 lm	20000h	E40	6.4kg
LN8400	MH	400W	36000 lm	20000h	E40	8.0kg
LN8400	HPS	70W	6000 lm	28500h	E27	3.0kg
LN8400	HPS	100W	10000 lm	28500h	E27	3.6kg
LN8400	HPS	150W	15000 lm	28500h	E27	4.2kg
LN8400	HPS	250W	27500 lm	28500h	E40	6.4kg
LN8400	HPS	400W	50000 lm	28500h	E40	8.0kg

## DIMENSIONAL DRAWINGS (in mm)



For 400W HPS



For 150W HPS